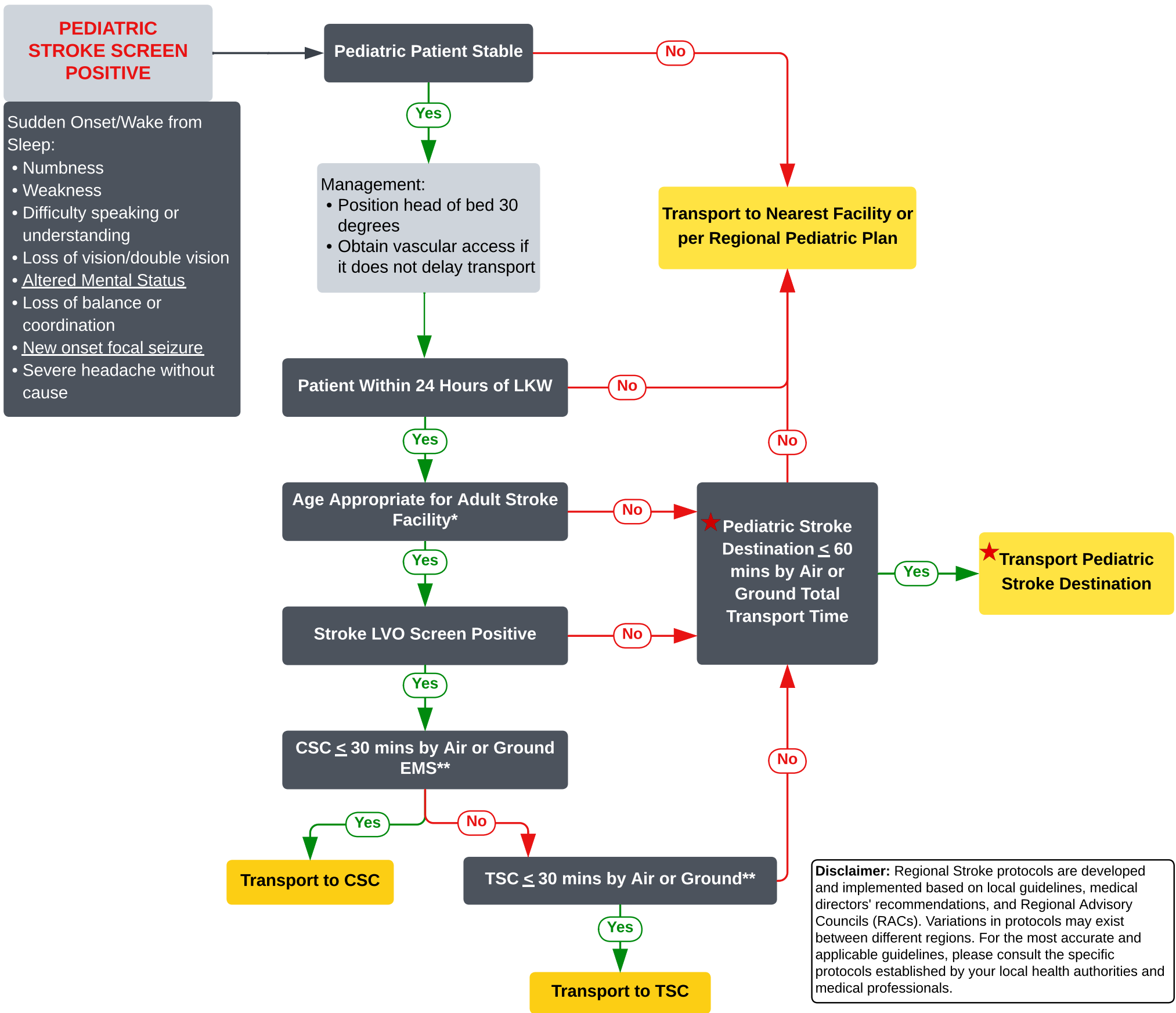


EMS Acute Pediatric Stroke Resource Document

INSERT WATERMARK - Resource Document



*Different adult stroke facilities will have different capabilities and willingness to evaluate and treat stroke patients under 18. RACs should outline the patients age appropriate for adult stroke facility admission based on regional facility resources and hospital policies; ** Within ≤ 30 minutes past the nearest Pediatric Stroke Destination and no more than 60 minutes total transport time by air or ground.

★ There are **no** formal national or statewide guidelines, certifications, or recognition systems for 'Pediatric Stroke Destination'. EMS Medical Directors should determine which nearby facilities they will direct pediatric patients with suspected or confirmed stroke. **MOST** of these facilities will be tertiary care children's hospitals. CSC: Comprehensive Stroke Center; TSC: Thrombectomy Capable Stroke Center; LVO: large vessel occlusion; RAC: Regional Advisory Council